



MTA 6642

CONSTRUCTION telescopic handler

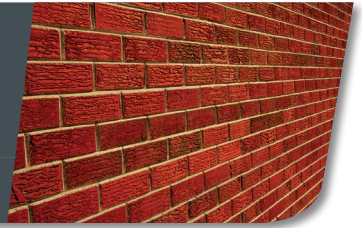


KEY FEATURES

- > 6,600 lbs. (2994 kg) Rated Capacity
- > 42'0" (12.8 m) Lift Height
- > 120-hp Tier IV Cummins Engine
- > Multi-Function Engine Diagnostic Display
- > 3-Speed Powershift Transmission
- > Exceptional Visibility and Spacious Cab - 17% Increase in Cab Width
- > Four-Wheel Drive / Four-Wheel Steer
- > Steering Wheel Mounted Horn
- > Power Port in Cab
- > Single Key Start
- > Lockable Storage Area in Cab
- > Air Intake Heater

MTA 6642

CONSTRUCTION telescopic handler

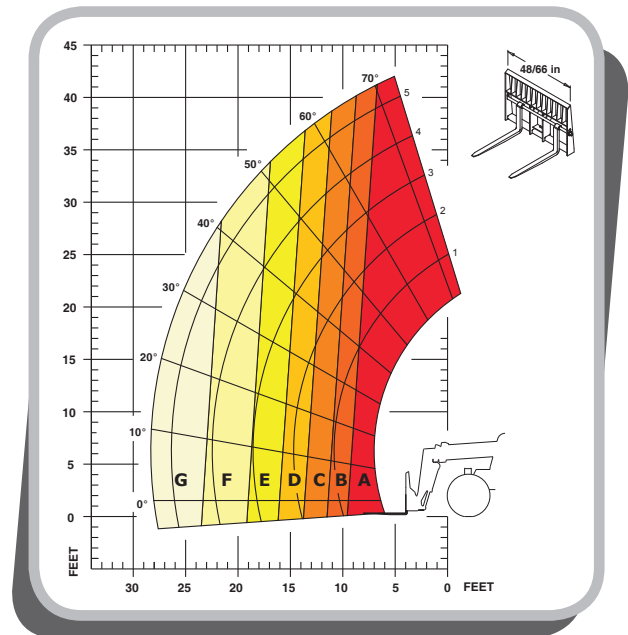


SPECIFICATIONS

CAPACITIES	Lift Capacity (kg)	6,600 lbs. (2994)
	Maximum Lift Height (m)	42'0" (12.8)
	Capacity at Maximum Lift Height (kg)	6,600 lbs. (2994)
	Maximum Forward Reach (m)	28'3" (8.6)
	Capacity at Max. Forward Reach (kg)	1,000 lbs. (454)
	Max. Reach Below Grade (mm)	14" (356)
ENGINE	Manufacturer	Cummins
	Power (kW)	120 hp (89)
	Aspiration	Turbocharged
	Model	QSF 3.8 Tier IV
	Rated Speed	2500 rpm
COMPONENTS	Transmission	Dana 3-speed Powershift
	Maximum Travel Speed (km/hr)	19.6 mph (31.5)
	Selective Steering	4-wheel 2-wheel Crab
	Hydraulically Actuated Internal Wet-Disc Brakes	4-Wheel
	Parking Brake	Spring-Applied, Hydraulic Release (SAHR) on Front Axle
	Axle Manufacturer	Dana
HYDRAULIC SYSTEM	Pump Type	Gear
	Total Capacity (L/min)	41.5 gpm (157)
	System Pressure (bar)	3,000 psi (207)
	Hydraulic Reservoir Capacity (L)	45 gal. (170)
GENERAL SPECIFICATIONS	Approximate Weight (kg)	22,000 lbs. (9979)
	Length – Less Forks (m)	19'1" (5.8)
	Width (m)	8'0" (2.4)
	Ground Clearance (mm)	16" (400)
	Wheelbase (m)	10'0" (3)
	Turning Radius (m)	13'8" (4.2)
	Overall Height (m)	7'10" (2.4)
	Frame Leveling	±10°
	Fuel Capacity (L)	47 gal. (178)
TIRE OPTIONS	13.00 x 24/12 PR	
	13.00 x 24/12 PR - Foam Filled	
	13.00 x 24/12 PR - Rock	
	13.00 x 24 Solid Rubber	

LOAD CHART

Load chart based on a 24" (610 mm) load center per ANSI/ITSDF B56.6



A 6,600 / 6,600 lbs. (2994 / 2994 kg)

B 6,000 / 6,600 lbs. (2722 / 2994 kg)

C 5,000 / 6,000 lbs. (2268 / 2722 kg)

D 4,000 / 4,000 lbs. (1814 / 1814 kg)

E 3,000 / 4,000 lbs. (1361 / 1814 kg)

F 2,000 / 4,000 lbs. (907 / 1814 kg)

G 1,000 / 3,000 lbs. (454 / 1361 kg)

outriggers up / optional outriggers down

This publication in no way constitutes an offer and the company reserves the right to alter specifications without notice.